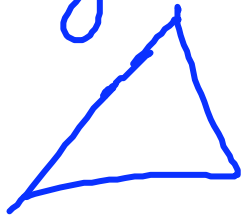


## P.210 Ch. 4.2 Angles of $\Delta$ 's

Angle Sum Th.

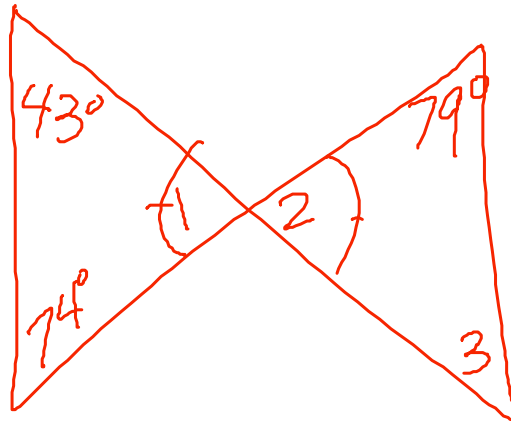


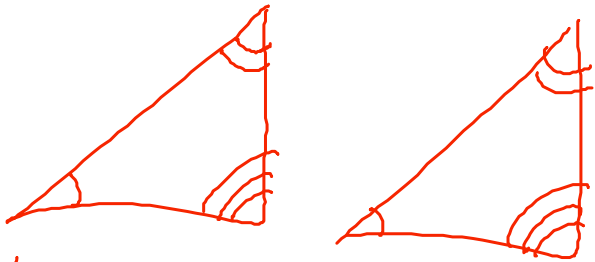
all interior angles = 180

$$m\angle 1 = 63^\circ$$

$$m\angle 2 = 63^\circ$$

$$m\angle 3 = 38^\circ$$

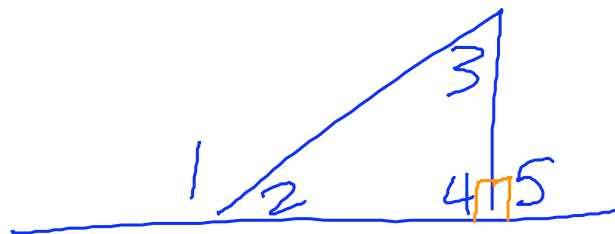




If 2  $\triangle$ 's are  $\cong$ , then the 3<sup>rd</sup> is

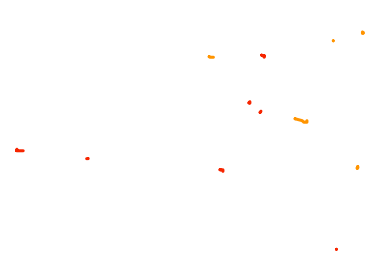
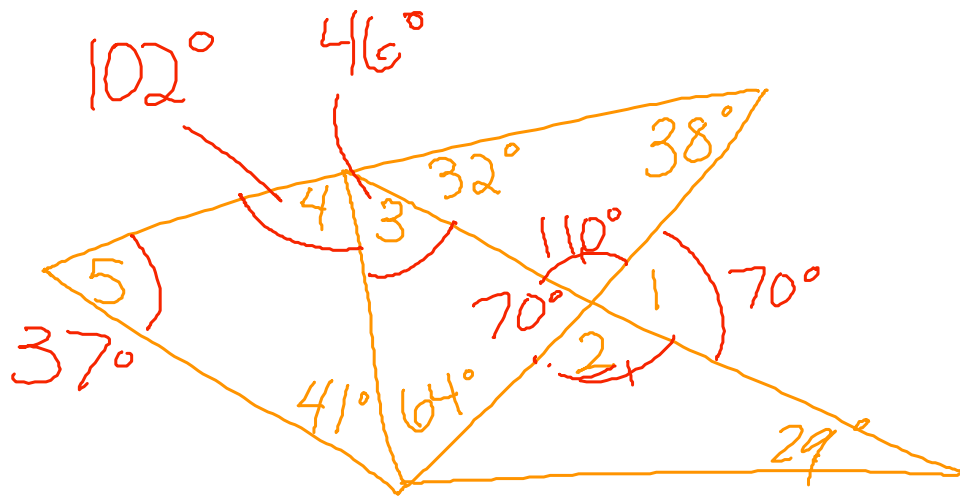
$$m\angle 1 = 110^\circ$$

$$m\angle 2 = 70^\circ$$

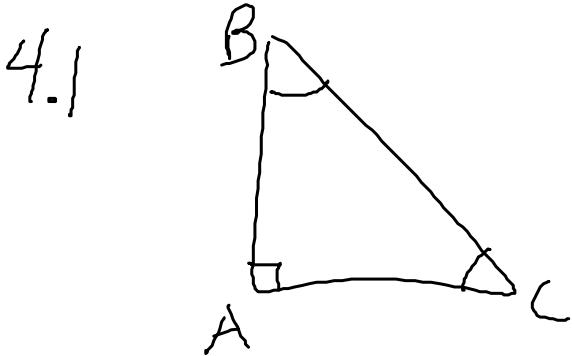


Exterior  $\angle$ 's 1,5

Interior  $\angle$ 's  
2,3,4



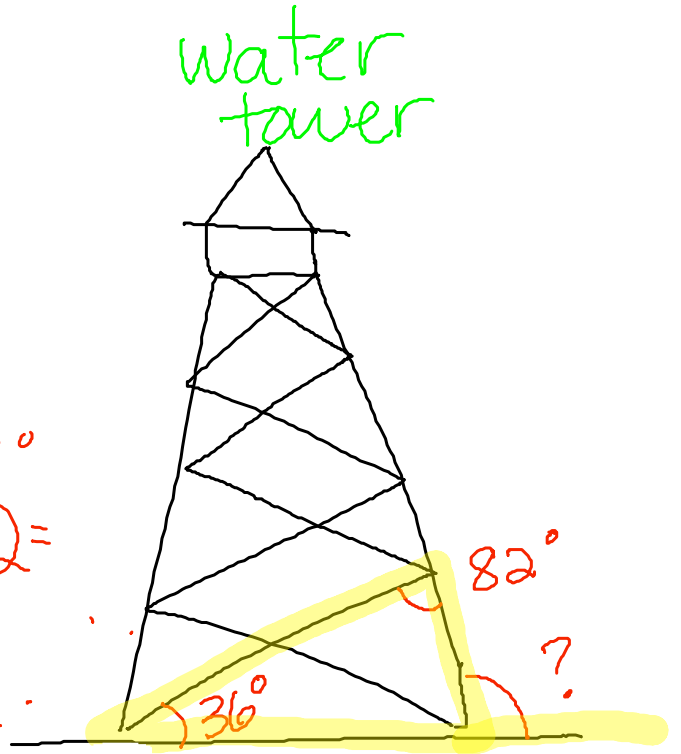
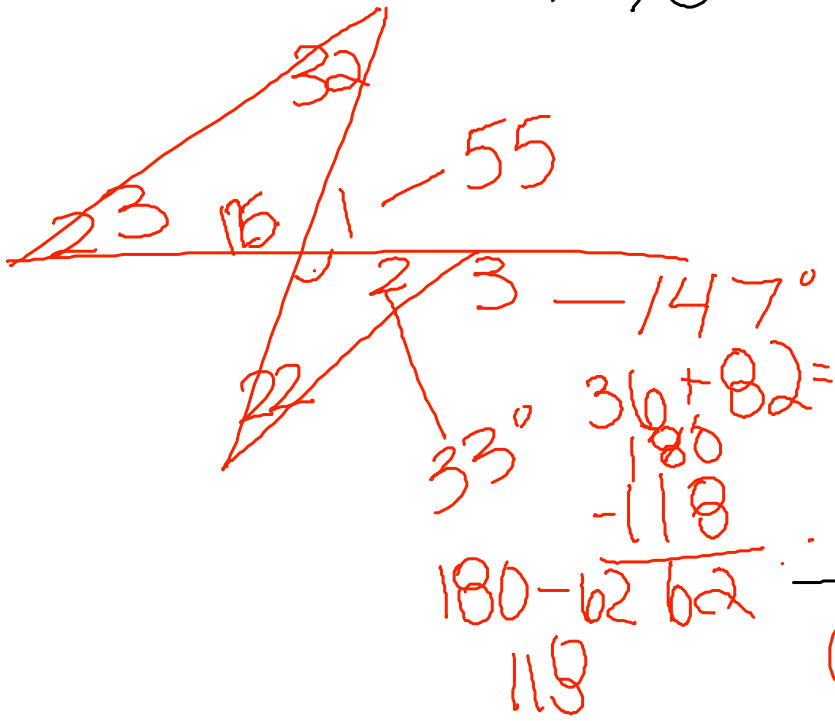
## Corollaries



4.2 can only  
have 1 Rt  $\angle$   
or 1 obtuse  $\angle$

If  $\angle A = 90$ , then  $\angle B + \angle C = 90$

P. 214 #3, 4, 5



Corollary 4.3  
 add 2 interior  $\angle$ 's =  
 opposite exterior  $\angle$ .

